

We're ready for you in Chicago.

Introducing our new **Air Freight Gateway**
located near O'Hare with easy access to
our hub in Rockford

Looking for quick turnaround in Chicago?

Every minute counts in air freight. While the Chicago market is often congested, Maersk's new Air Freight Gateway in Elk Grove Village is strategically located for quick access to ORD. It's also conveniently located near I-90 for quick connections via our hub at RFD.

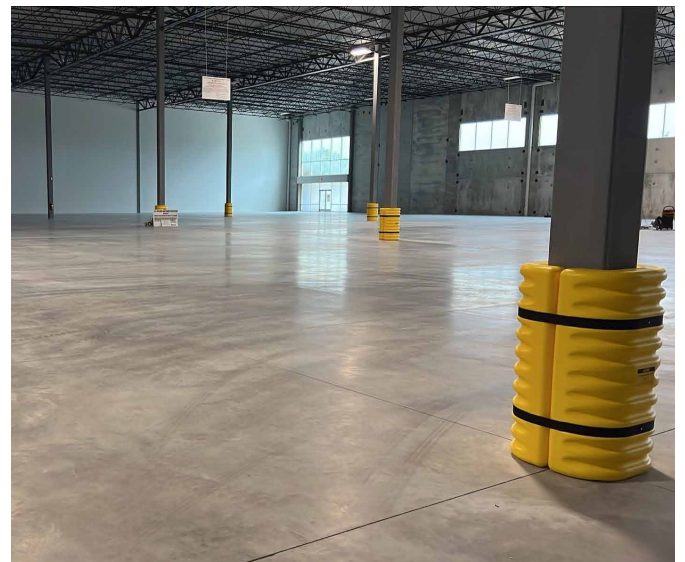
We help you avoid long lines and congestion with access to planeside recovery and direct transfer to our facility. With our dedicated fleet of vehicles, you can be assured of careful, accurate and fast handling of your cargo— whether you're importing auto parts from Germany or exporting raw material to China.

What's more, 70% of the US is within an overnight truck drive from this air freight gateway.



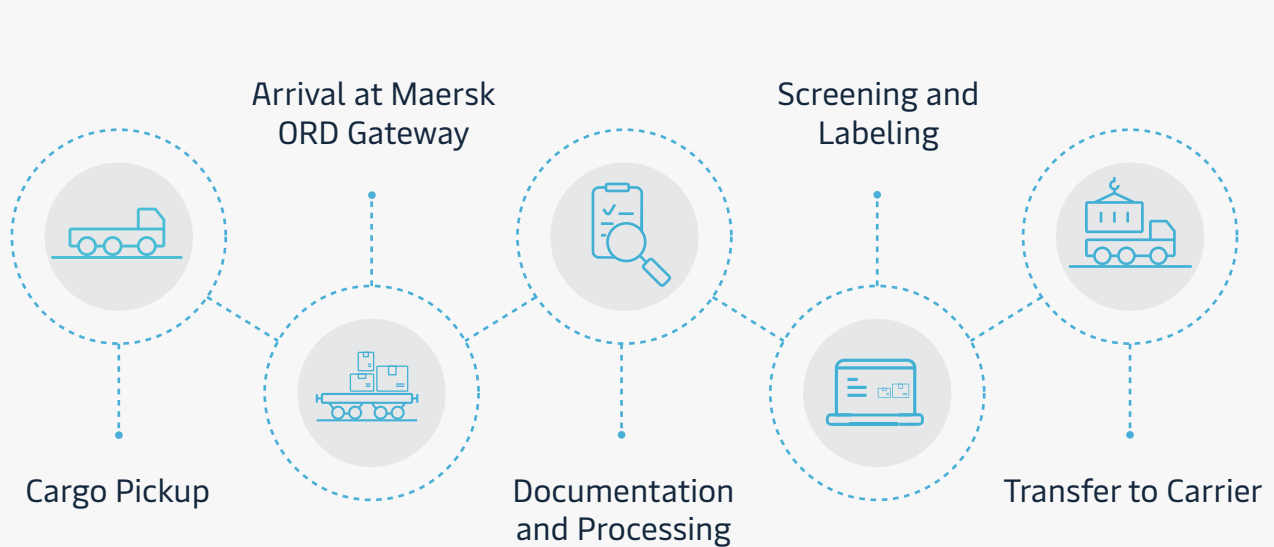
Facility Specifications

- ▶ 60,777 square feet including 3236 square feet of office space
- ▶ 6x10 ft high dock doors with 15-ton levelers
- ▶ 2x12 ft high dock doors with 15-ton levelers
- ▶ 1 drive-in door with ramp
- ▶ Bonded Container Freight Station (CFS) with US Customs
- ▶ Certified Cargo Screening Facility (CCSF) with TSA
- ▶ 31 NDAA compliant CCTV cameras
- ▶ Fire suppression system



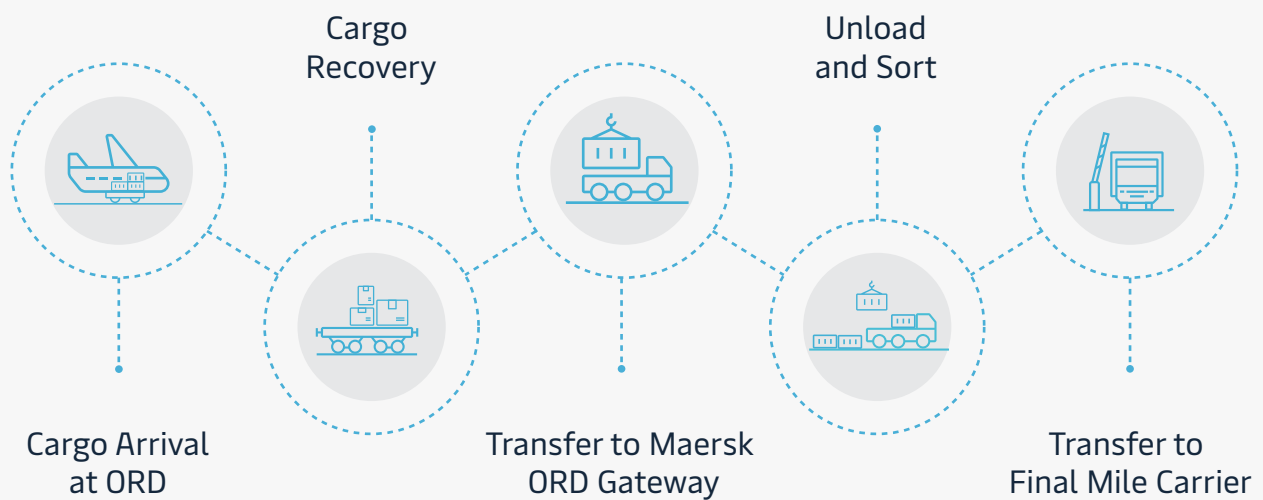
THE EXPORT PROCESS

The time taken from arrival at ORD Gateway to tender and carrier is no longer than 24 hours, pending carrier booking.



THE IMPORT PROCESS

The time taken from arrival at ORD gateway to being ready for delivery is within 24 hours, pending customs clearance



Questions?

Talk to your Maersk Sales representative about our new [Chicago Air Freight Gateway](#).

ALL THE WAY